



Seven County Infrastructure Coalition

October 22, 2021



UINTA WAX



Uinta Basin

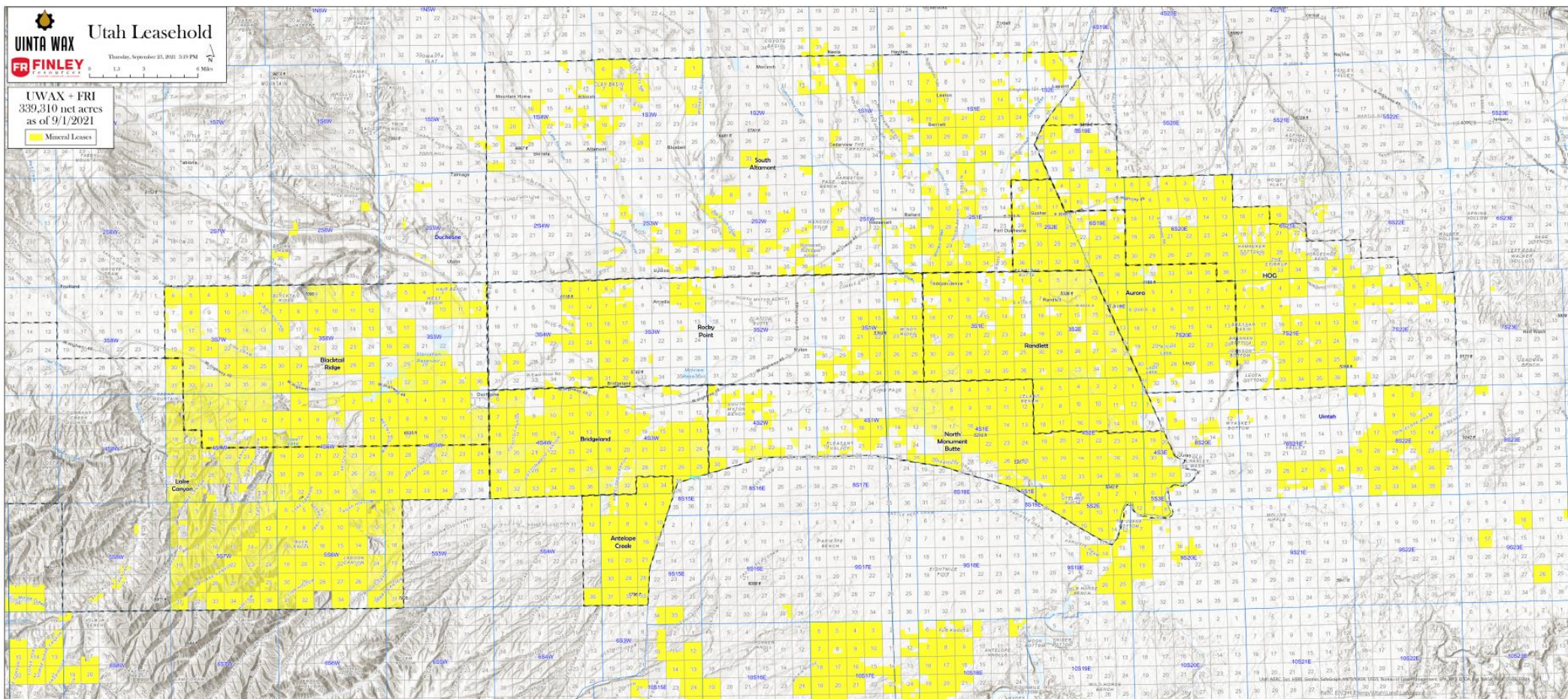
Topics

- Uinta Wax / Finley Resources Overview – A Partnership Between CH₄ Energy and Finley Resources
- Growth Model of Basin Production and Implications for Basin Stakeholders
- Unique Qualities of Uinta Black & Yellow Wax – A Transition Material



Uinta Wax / Finley Resources

- 339,310 Net Acres
- 28,000 BOPD Wax Production
- 130 employees in Uinta Basin
- First rig brought back into Basin (August 2020)
- 3 rigs running today – likely 4 rigs in 2022





Uinta Wax / Finley Resources

Wildcat Terminal

- Wax volumes exported to Gulf Coast consistently since November 2020
- Wildcat Export Facility upgraded to 30,000 BOPD
- Wildcat Export Facility Phase II upgrade in 2022 to 60,000 BOPD
- 900 Railcars in fleet





Uinta Wax / Finley Resources

The Uinta Basin Community



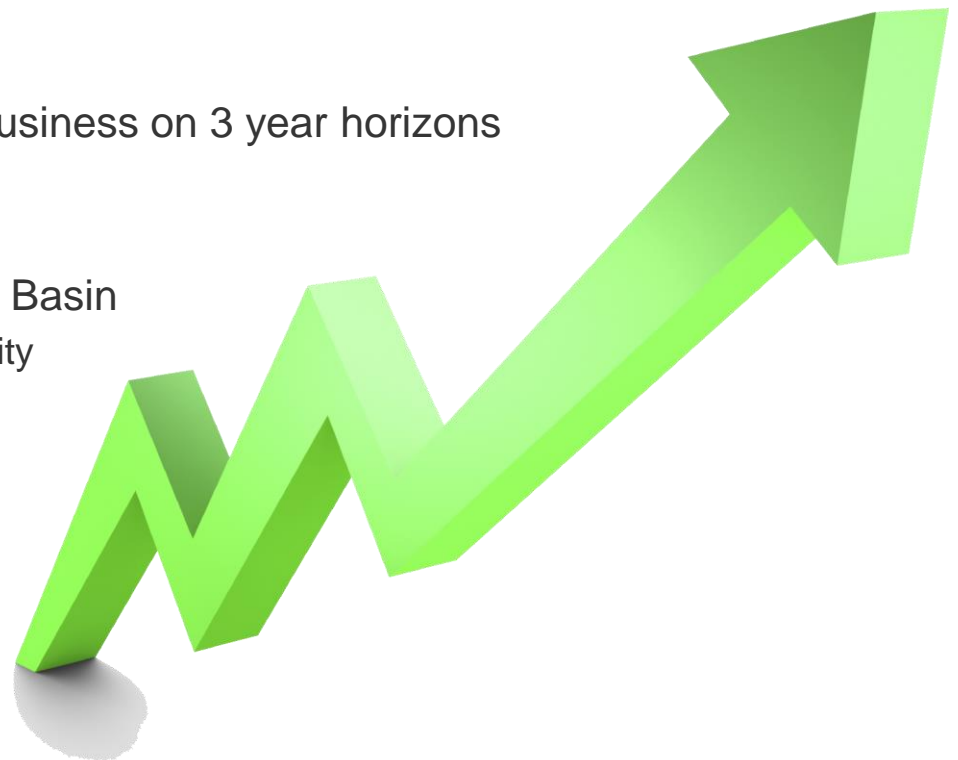
- Partners and Stakeholders
 - Ute Tribe
 - Tribal Preference Companies
 - Oilfield Service Companies
 - Community Banks
 - Local Government
 - Local Business Owners
 - State of Utah Legislatures
 - Utah Department of Transportation
- Commitment to ESG / Emissions
 - Adherence to Regulations/Guidelines
 - Promoting a Culture of caring about emissions
 - Finding and resolving problems at the field level
 - Compensation tied to ESG goals



Uinta Basin

An Extremely Bright Future

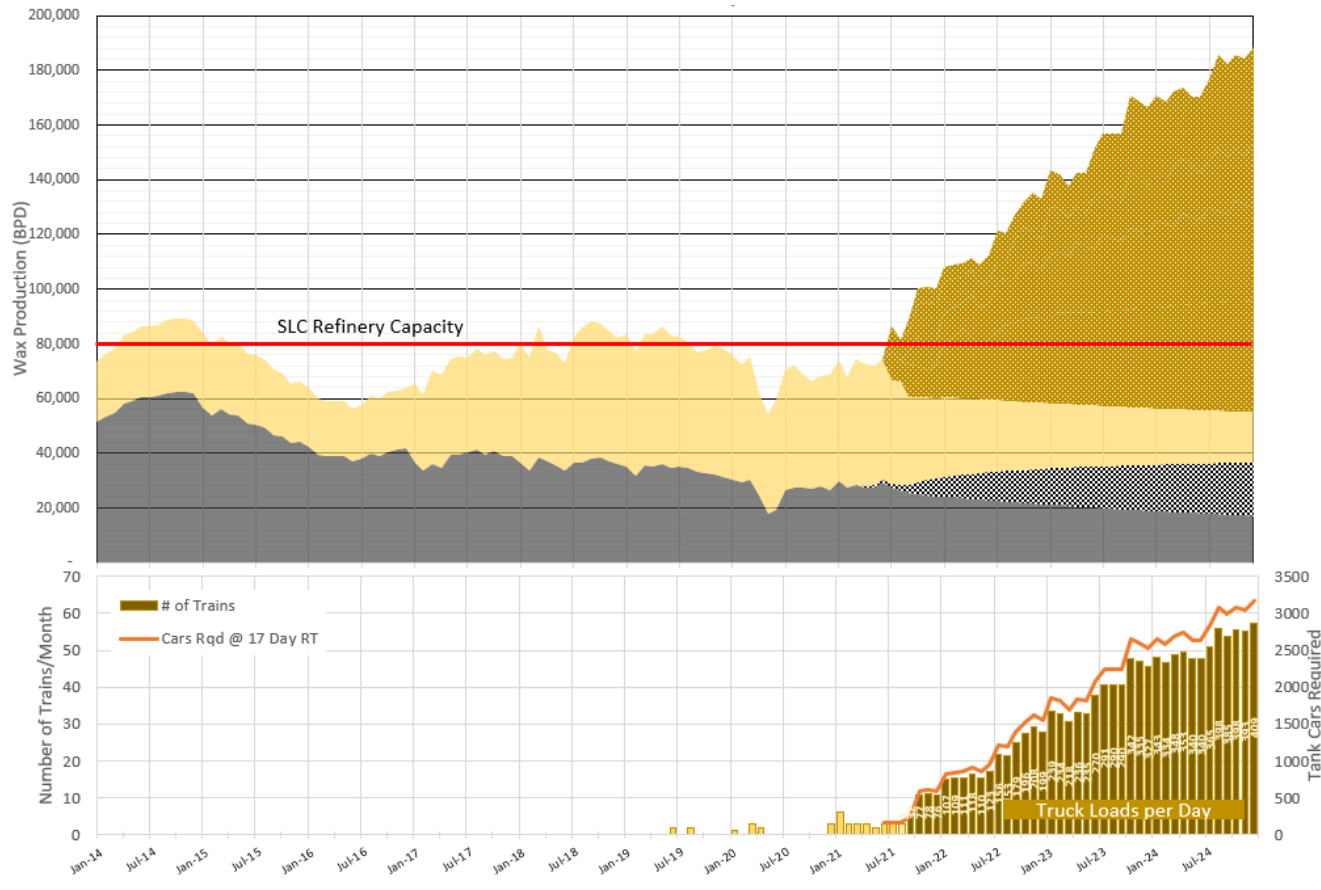
- **Drilling results** have been economically positive
- Uinta Wax will run rigs down to \$45.00 – most likely other drillers will too
- **Demand** for the Uinta wax is significant
 - Salt Lake City
 - Texas and Louisiana Gulf Coast Refineries
 - Mid Continent
 - International Refineries
 - Specialty Products
- **Oilfield Service companies** can plan their business on 3 year horizons
 - Capital/Equipment
 - Labor
- **Community Banks** have more confidence in Basin
 - Increased loan capacity available to the community





Uinta Basin

Uinta Basin Export Growth Model Assumes SLC Market at 80,000 BWxPD



In 3 years

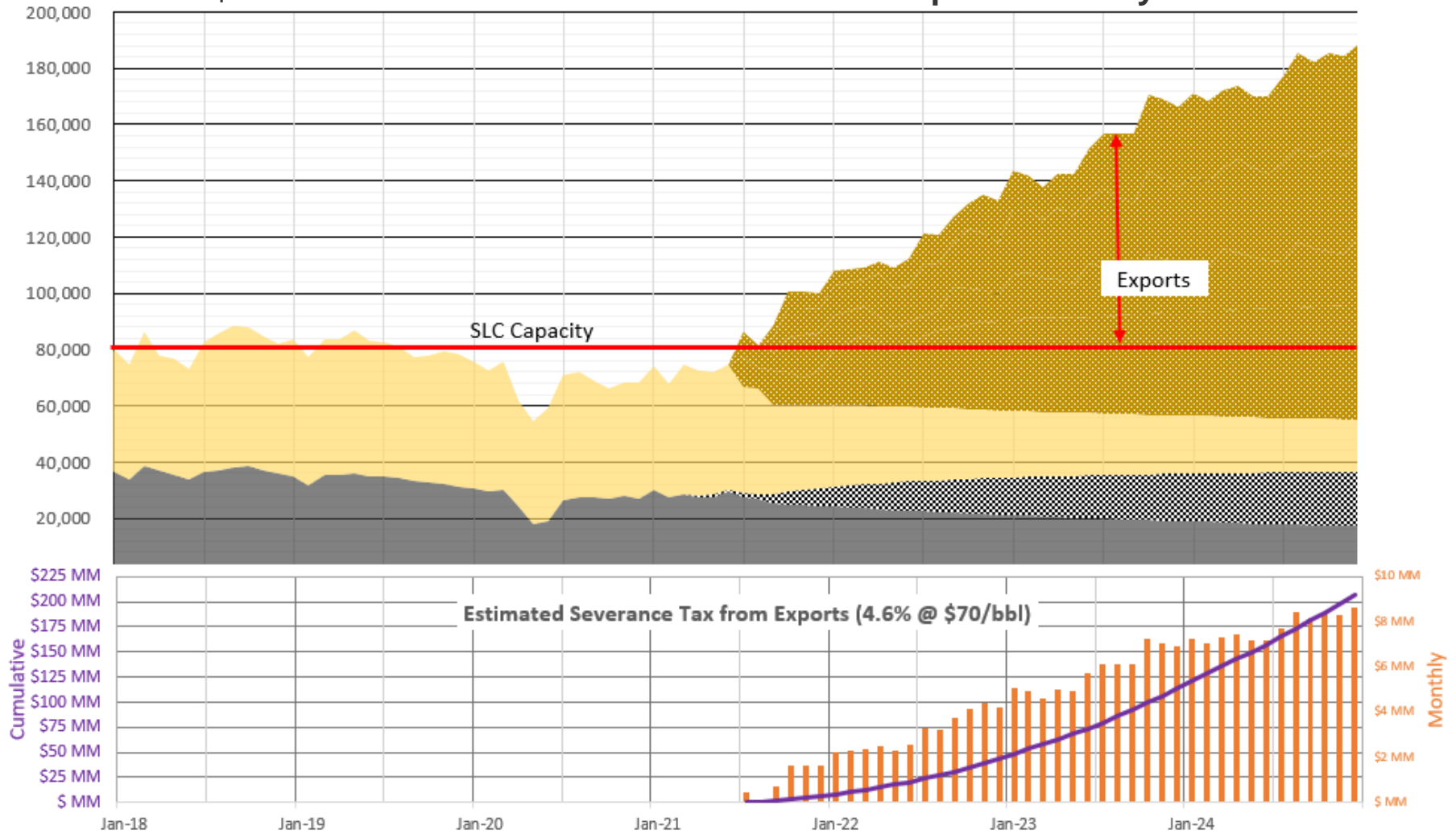
- Total Basin Production 180,000 BPOD
- Exports 100,000 BOPD
- 200 Crude Trucks and 400+ Drivers
- 3000 Rail Cars



Uinta Basin

Severance Tax From Exports

\$200M in incremental severance tax from exports over 3 years.





Uinta Basin

Significant Future Drilling Locations

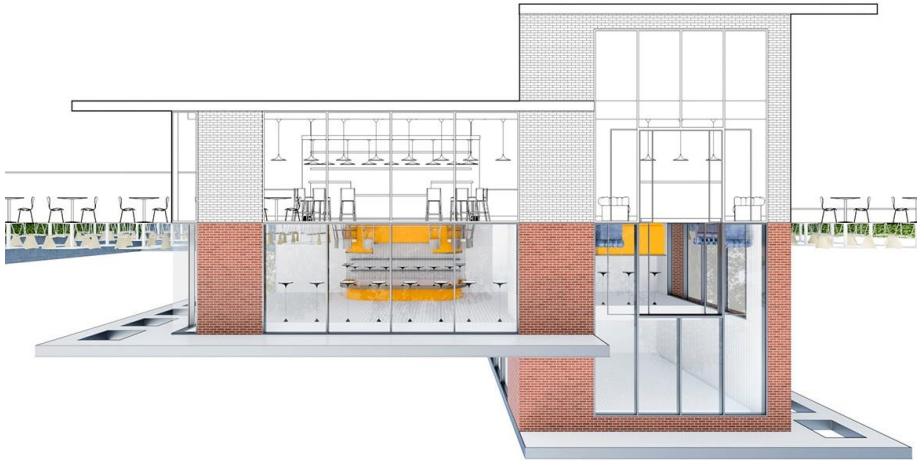
Uinta Basin Well Count

6 Hz Rigs @ 15 wells/year | 2 Vt Rigs @ 72 wells/year

	Hz Wells	% Developed	Vt Wells	% Developed
Total Locations in Basin	8208	100%	19008	100%
Current Well Count	348	4.2%	3753	19.7%
New Wells added in 3 years	285	3.5%	456	2.4%
Total Current + 3 yr New Wells	633	7.7%	4209	22.1%

Uinta Basin

An Extremely Bright Future



The Basin will need more...

- Hotels
- Restaurants
- All goods & services for consumers
- Lending Capacity from Community Banks

The Basin is challenged to...

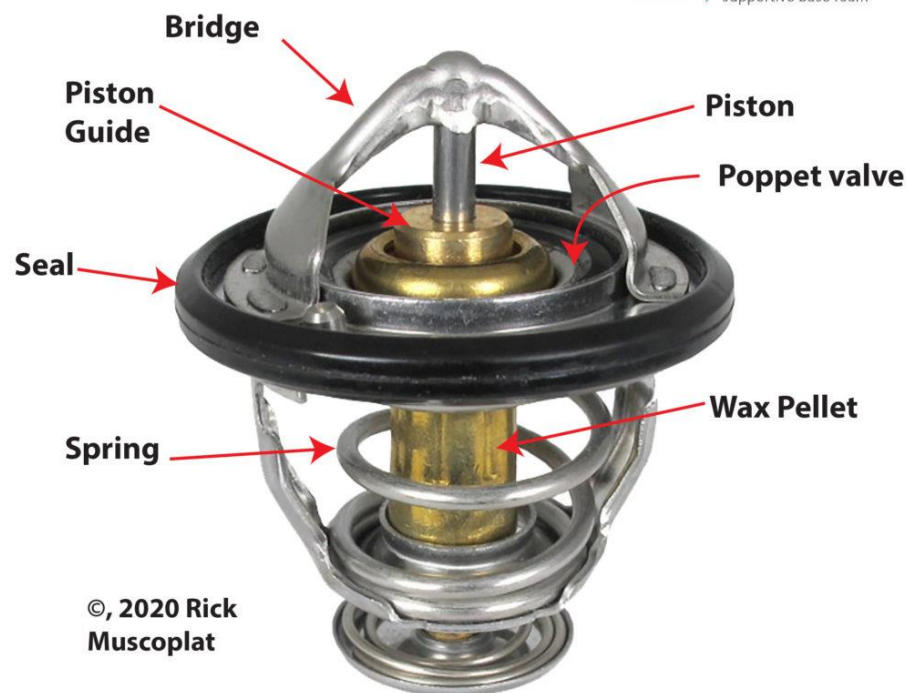
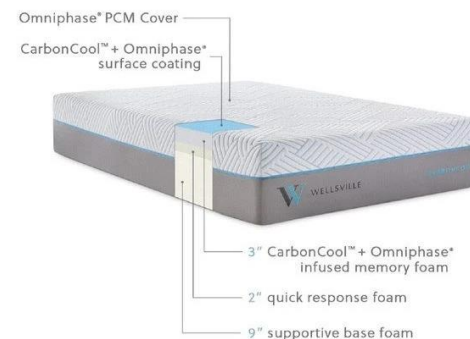
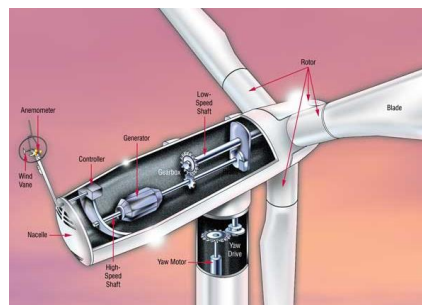
- Bring in more labor
- Bring in more oilfield equipment

Uinta Industrial Wax (Paraffins)

A Journey in Discovering our Advantages | Uinta Wax is a Transitional Material

Things we Know

- Excellent source for **Group III** lubricants used in wind turbines and high tolerance machinery
- Paraffins are a **Phase Changing Material**
 - Highly efficient in heat storage
 - Volume increases by 15-20% as wax transitions from a solid to liquid
 - 1 billion automotive thermostats
 - Significant applications in driving pistons to regulating temperatures
- Used in **many applications that raise our standard of living**
 - Building Materials
 - Textiles – Apparel, Bedding
 - Cosmetics/Pharmaceuticals
 - Packaging and Cold Chain
 - Automotive





Uinta Industrial Wax (Paraffins)

A Journey in Discovering our Advantages | Uinta Wax is a Transitional Material



Things we are discovering/researching

- Uinta Industrial Wax has less carbon intensity in its production, refining, and other applications
- 25% of wax is used in **non combustibles** – lubes, etc.
- Uinta Industrial Wax can be used for **direct cat feed**
- Low Sulphur, metals and acidity means **less energy in the overall refining process**
- Uinta Industrial Wax is a **critical transition material**
 - Lubes
 - Heat Pumps
 - Wax Motors



Maybe, in a decarbonized world, we don't need crude from oil field, but the world needs Uinta Industrial Wax.